



**Bogota:  
It's new  
strategy to build  
a sustainable  
and inclusive  
City**



A dark gray world map is centered on the page. A white speech bubble with a black border is positioned over South America, pointing to the location of Bogotá. The word "Bogota" is written inside the bubble in a yellow, italicized serif font.

*Bogota*

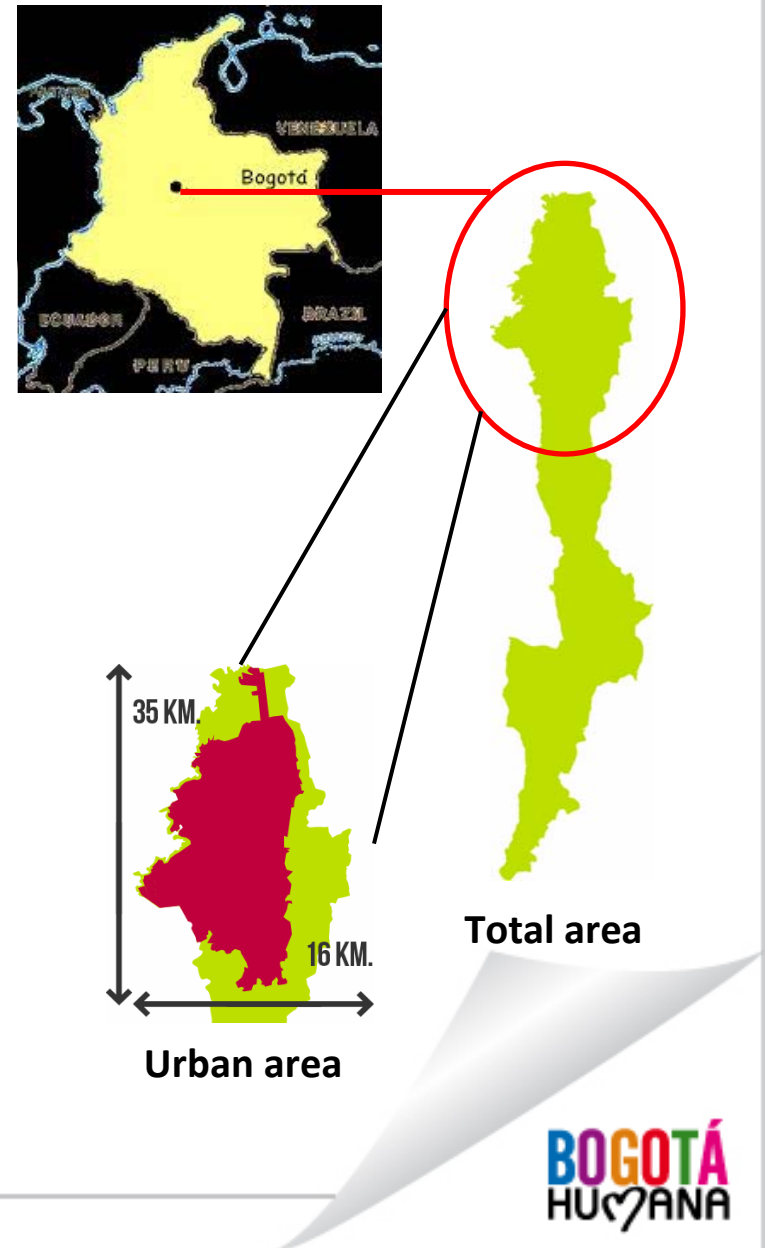


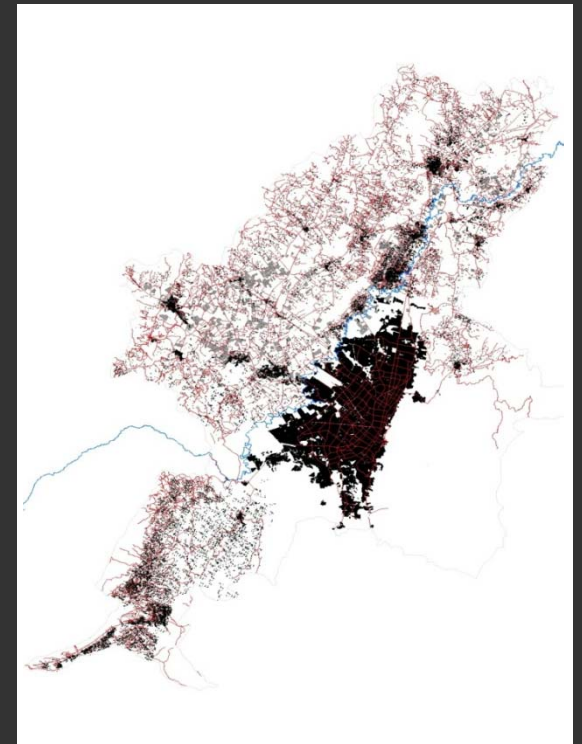
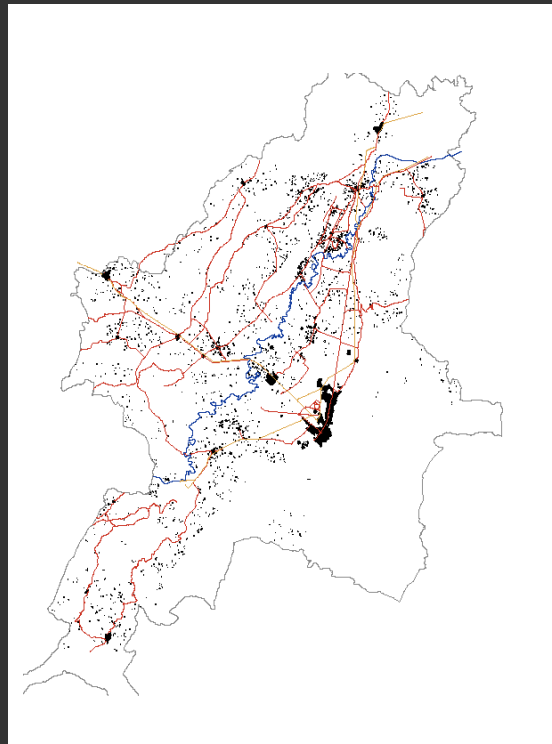
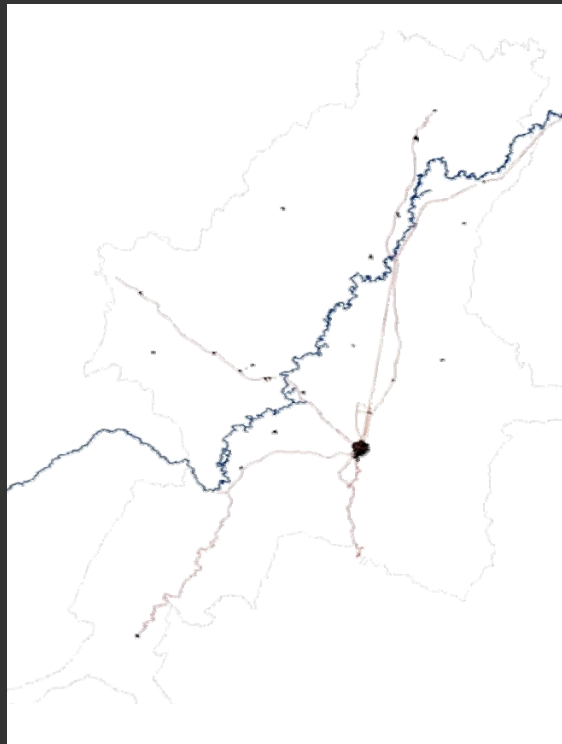
**BOGOTÁ**  
**HU**MANA

SECRETARÍA DE PLANEACIÓN

# Bogota: Main Facts

- ✓ **16%** of the national population (7,5 million)
- ✓ **26%** of the national GDP
- ✓ **19%** of national formal employment
- ✓ Regional market size: **29%** of the national
- ✓ **First** in Universities and research institutes
- ✓ **First** cargo Airport in Latin America (617.5 thousand tons per year)
- ✓ **Second** in non-traditional goods exports in Colombia
- ✓ **Third** passengers Airport in Latin America (20.3 million 2011)
- ✓ Bogotá's GDP (U.S. \$ 89 million) is **higher than** that of some countries such as Ecuador, Bolivia, Paraguay and Uruguay





The regional urban land expanded 30 times in 50 years

## Bogotá's population growth:

**1938** (325.650)   **1964** (1'697.311)   **1973** (2'855,065)   **2010** (7'363.782)



ALCALDÍA MAYOR  
DE BOGOTÁ D.C.

SECRETARÍA DE PLANEACIÓN

**BOGOTÁ**  
HUMANANA

# plan de ordenamiento territorial POT



*Land Use Plan (POT)*

*It defines land use and land management mechanisms*



ALCALDÍA MAYOR  
DE BOGOTÁ D.C.

BOGOTÁ  
HUMANANA

SECRETARÍA DE PLANEACIÓN

# Bogota's Land Use Plan

2000

- Initially formulated in 2000**  
General Policies, Objectives and strategies:
- A compact City
  - Integrated at regional Level

2003

- Revision: 2003**
- Insert Bogota into the global network
  - Advance towards a more competitive city

2013

**Extraordinary amendment 2013**  
New mechanisms and instruments to:

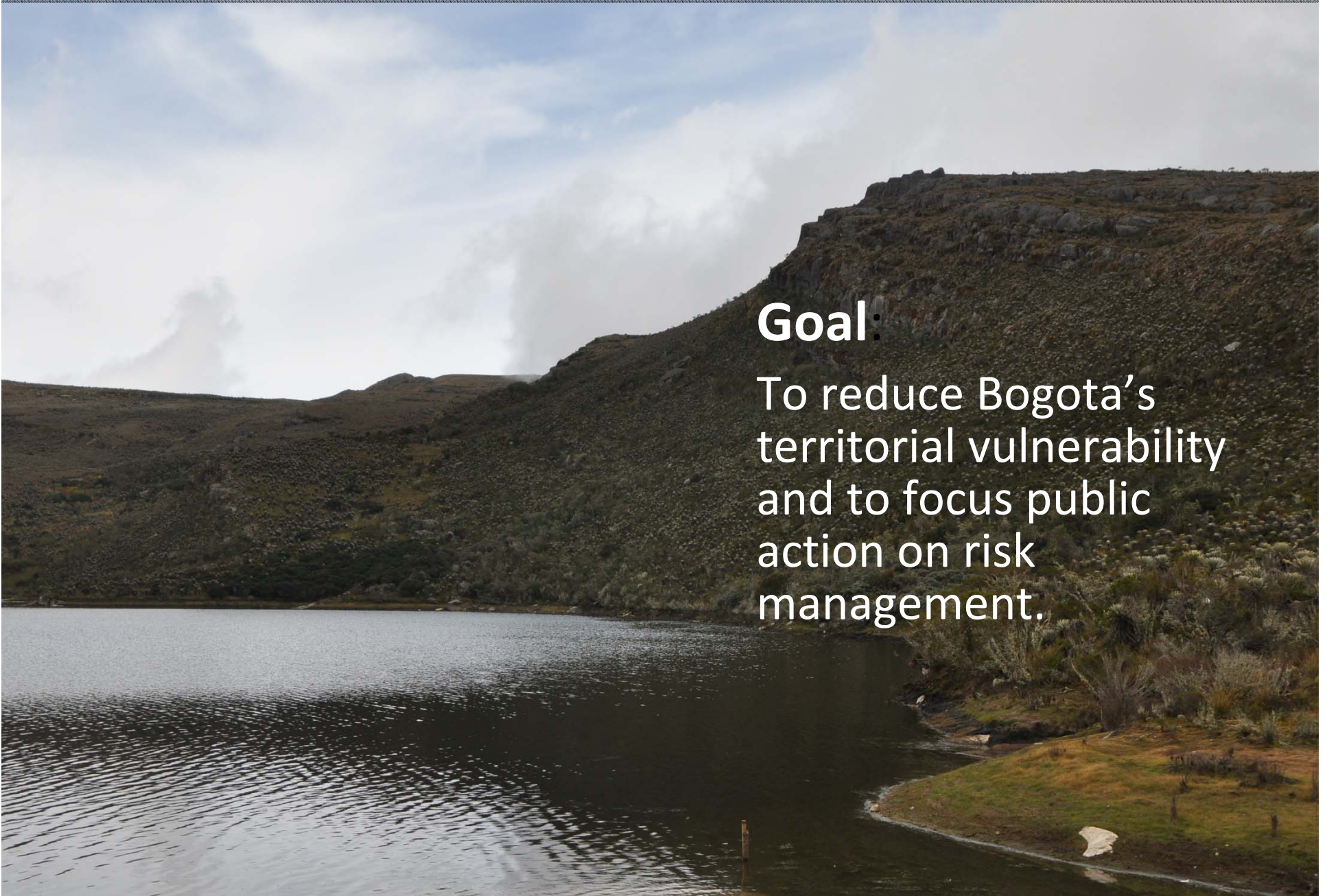
- Adapt the city to climate change
- Achieve the objective of a compact city
- Advance towards a more inclusive and integrated city



# Climate change

## Goal:

To reduce Bogota's territorial vulnerability and to focus public action on risk management.



# Climate change – main decisions

✓ To increase protected areas and control urban expansion

## VARIATION OF THE MAIN ECOLOGICAL STRUCTURE



ADDITIONAL AREA: 36.900,04 HECTARES



■ Urban expansion areas

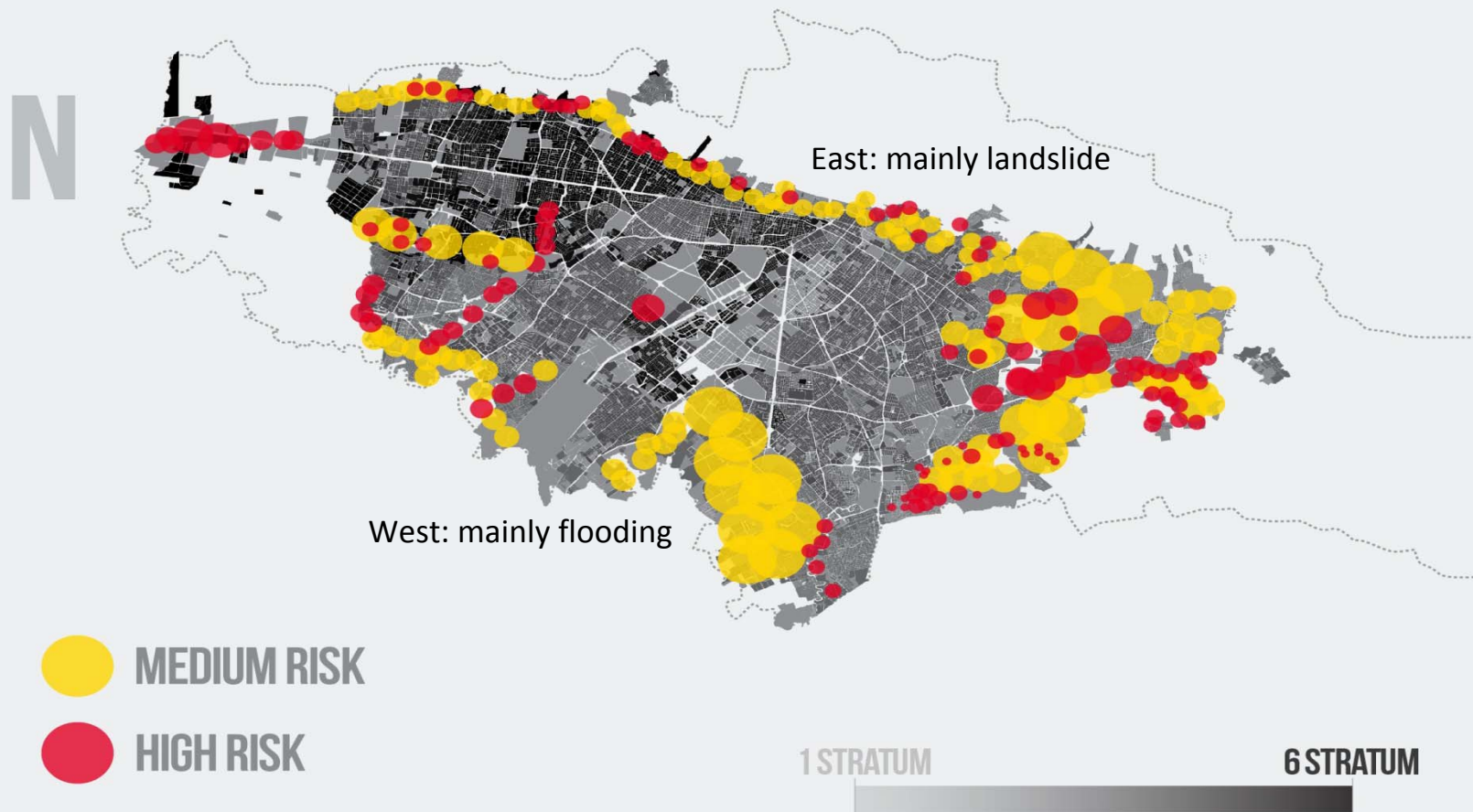
● ECOLOGICAL STRUCTURE    ..... URBAN LIMIT



# Climate change – main decisions

✓ Risk management

## STRATUM, LAND SLIDE AND FLOODING



# Climate change – main decisions



## Mining:

- To prohibit new mining activities, while establishing obligations towards the progressive closure of the existing mining sites
- New uses shall be defined (public parks, urban amenities or new developments). Previous restoration and stabilization measures are responsibility of land owners

# Climate change – main decisions

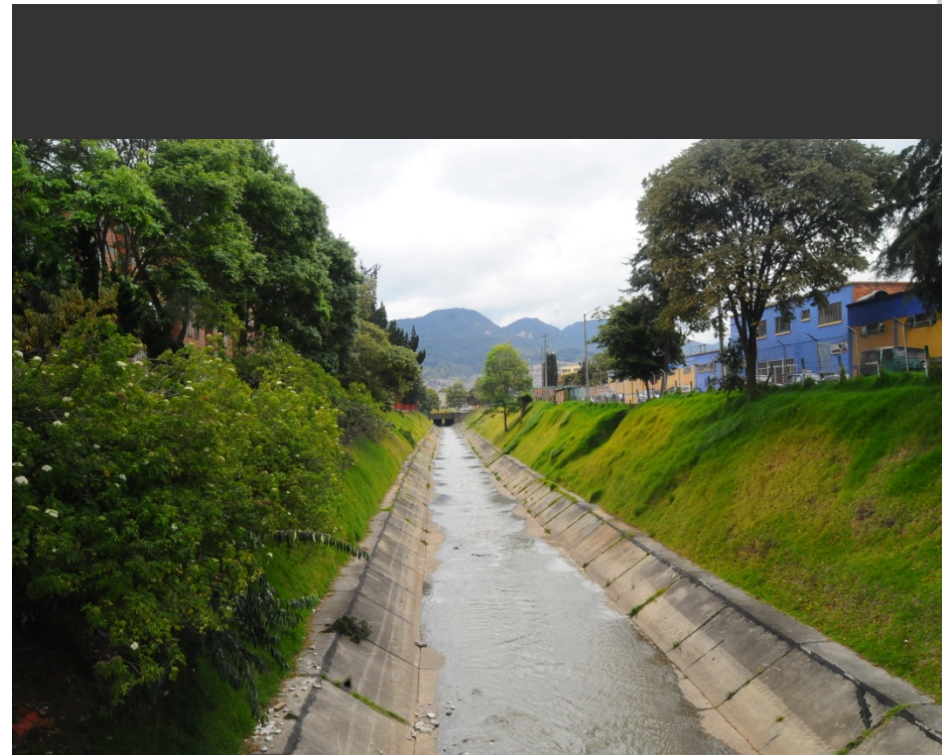
## Management of water resources

- To separate the urban drainage system management from the sewage system management.
- Rivers, canals and wetlands are subject to regional environmental management programs.
- To implement techniques and technologies for retention and superficial runoff mitigation increasing forestation and green areas in public spaces, private yards, terraces, etc.



ALCALDÍA MAYOR  
DE BOGOTÁ D.C.

SECRETARÍA DE PLANEACIÓN



*Fucha River*

**BOGOTÁ**  
HUMANANA

# Climate change – main decisions

## Sustainable Mobility

- To promote the use of non-motorized means of transportation, increasing biking and open air path networks.

Today 55% of travels longer than 15 minutes are done by non motorized means.

- To encourage gradual migration of private and public transportation systems to cleaner energy source technologies

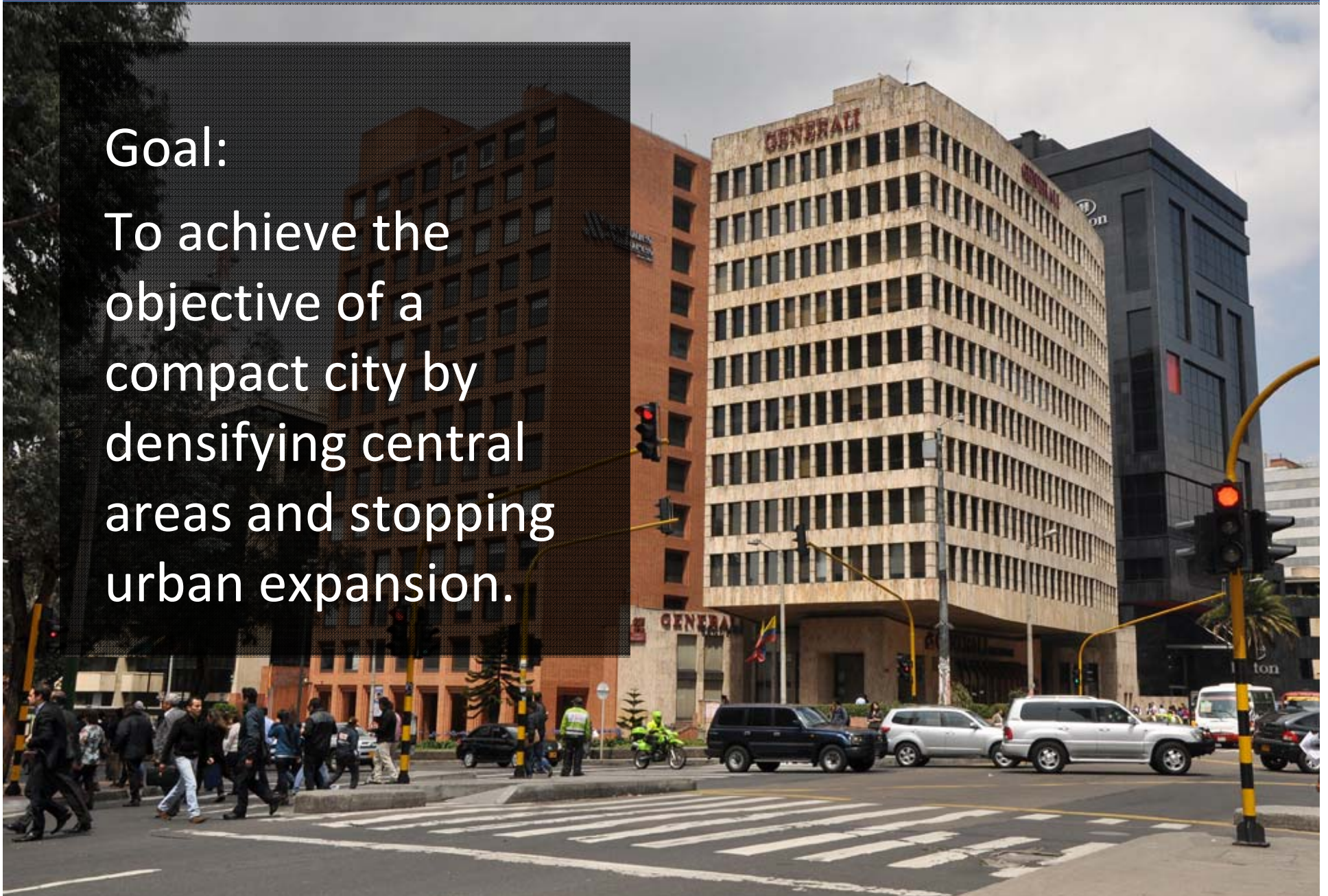


ALCALDÍA MAYOR  
DE BOGOTÁ D.C.

# A Compact City

Goal:

To achieve the objective of a compact city by densifying central areas and stopping urban expansion.



# URBAN DENSITY (Inhabitants/Hectare)

Current situation

## SUBA RINCÓN

475



## DOWN TOWN

140

(average)



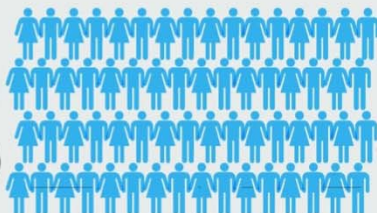
Underused infrastructure, such as greyfields, brown fields, warehouses, etc.

N

## PATIO BONITO

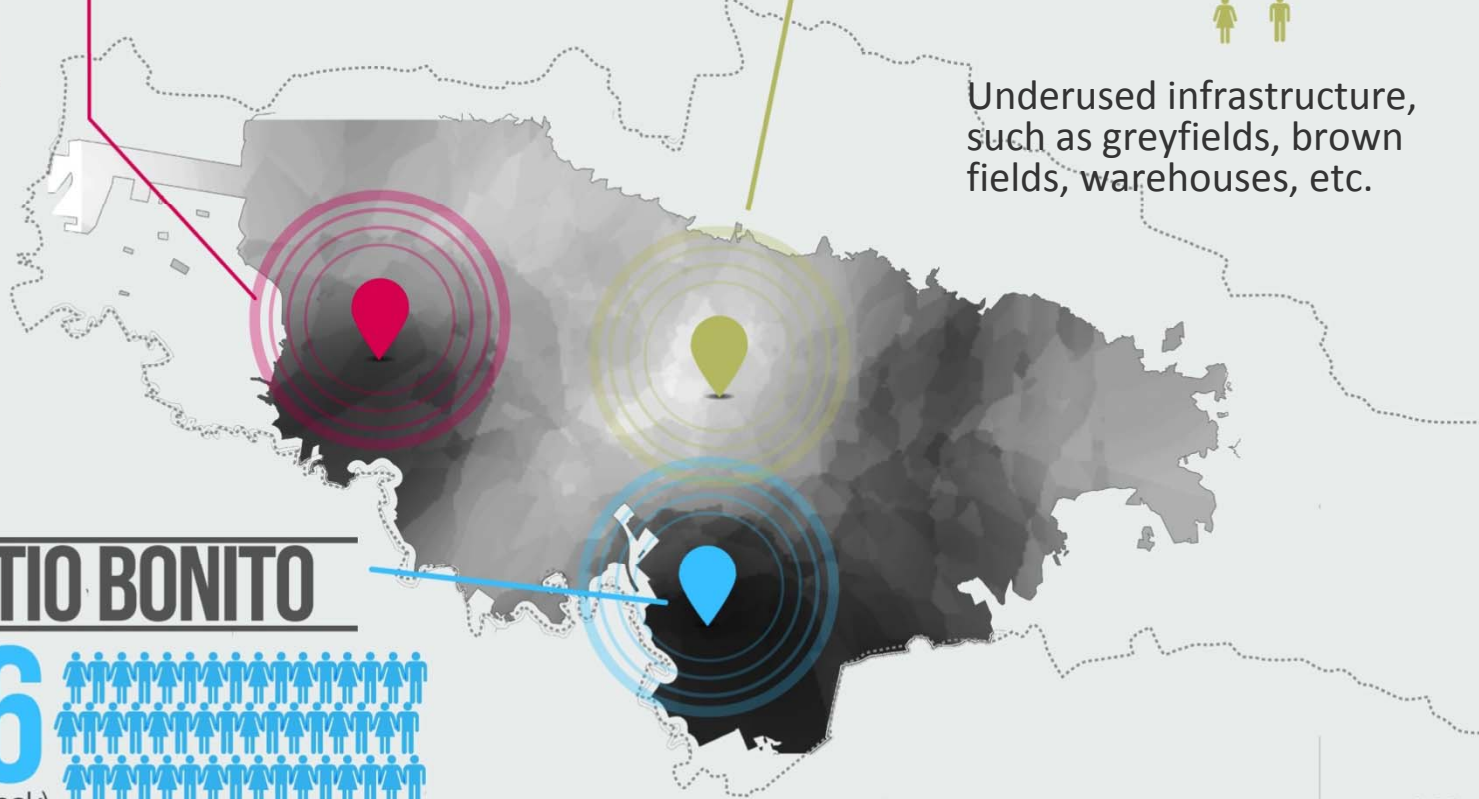
636

(Bogota's Peak)



80

636

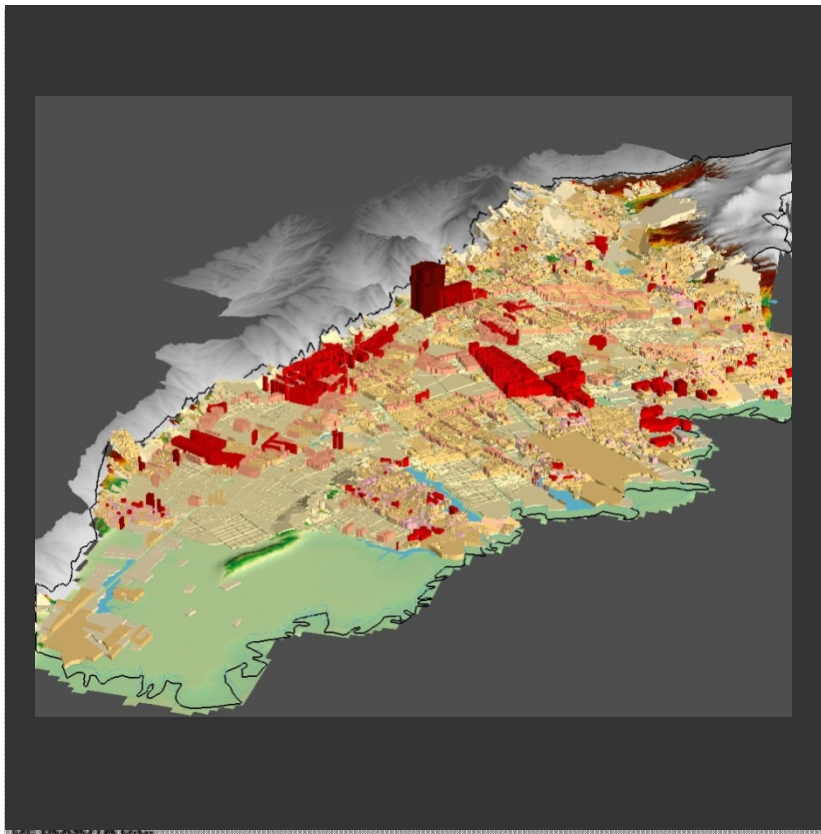


# A Compact City – Main decisions

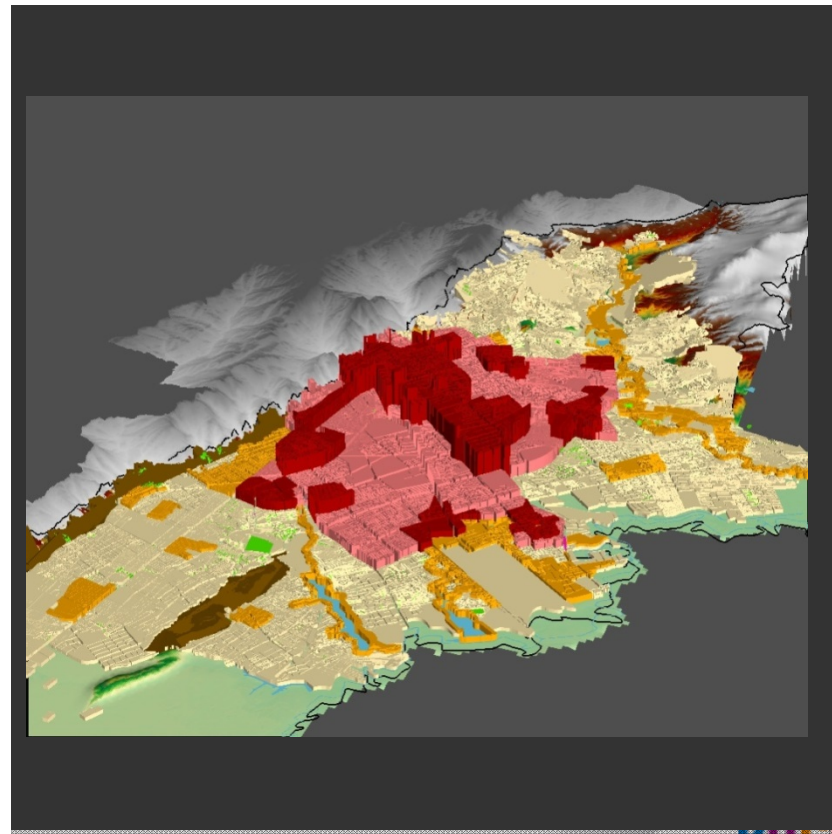
## New density regulations

- Higher densities are allowed in the central urban areas.

Before (Decreto 190)



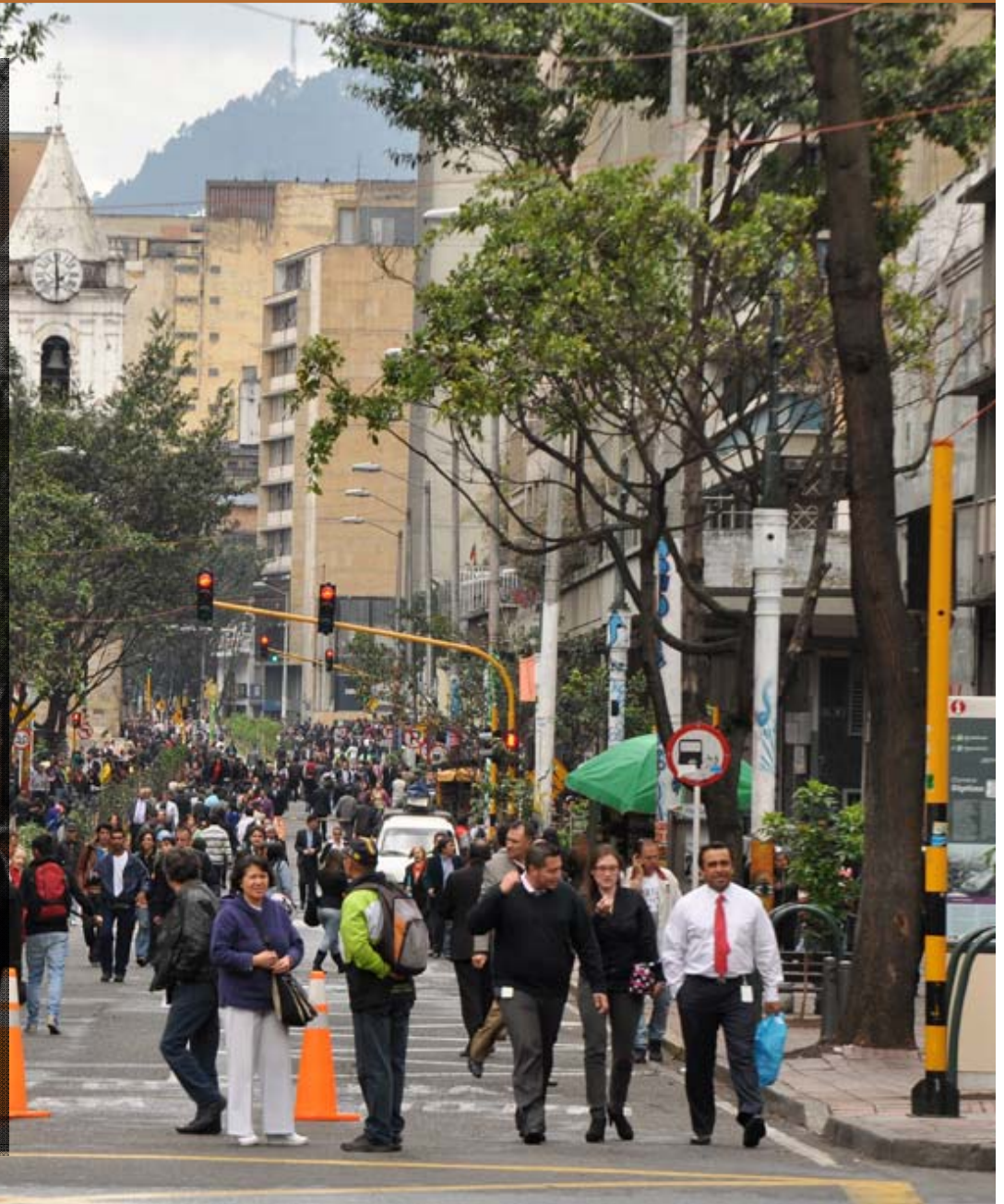
Now (Decreto 364)



# Towards and inclusive city

Goal:

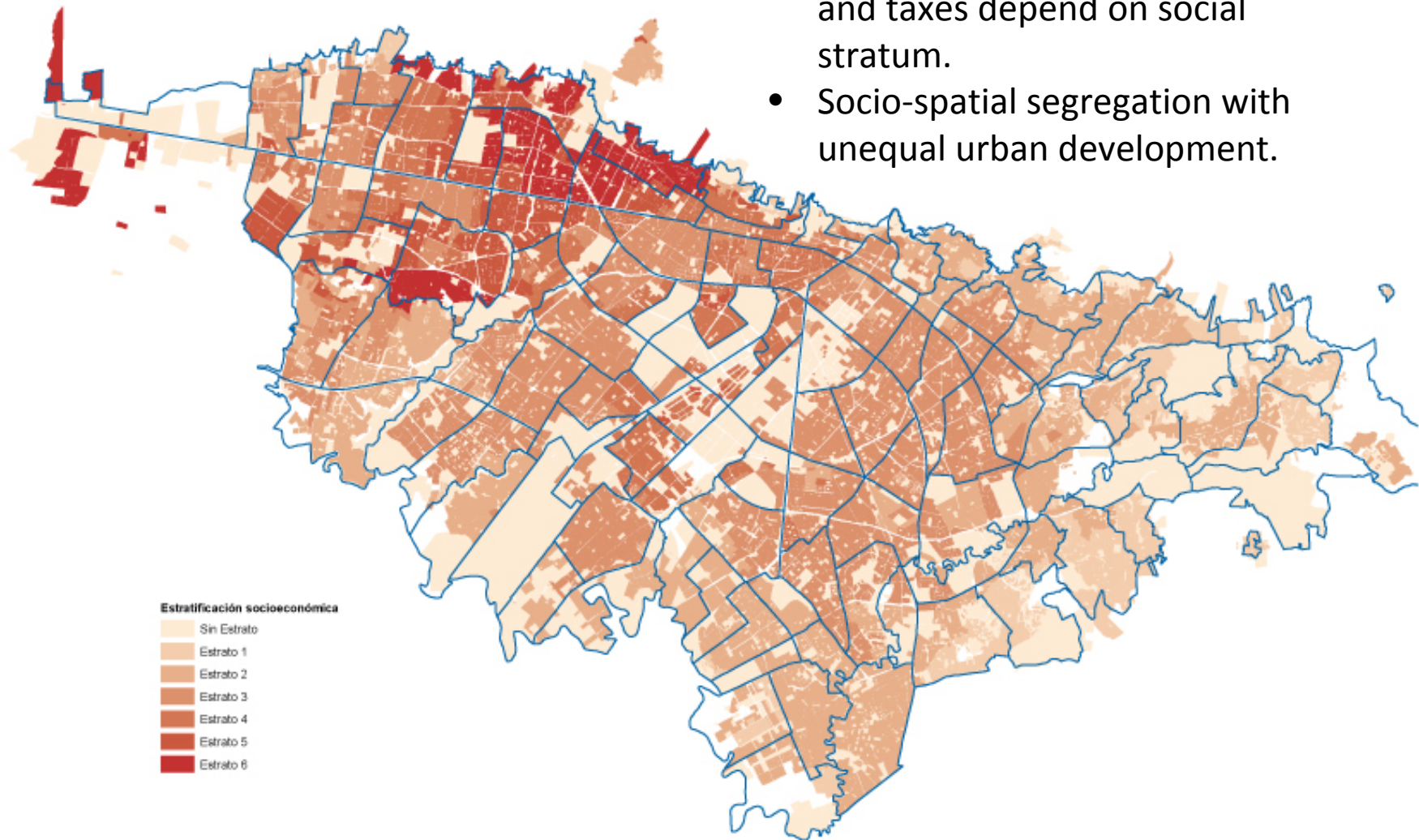
To facilitate interaction between different social groups (low and high income) and promote social integration in the central areas.





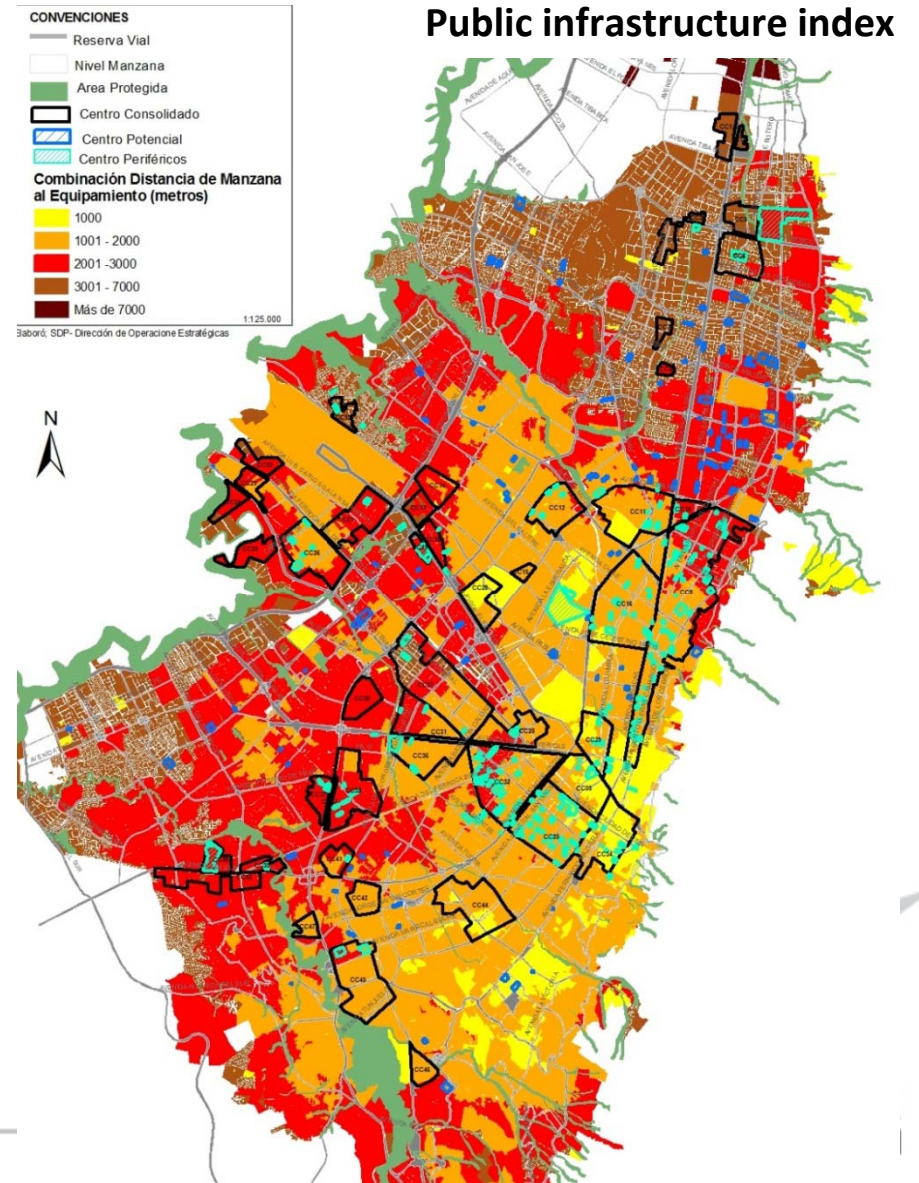
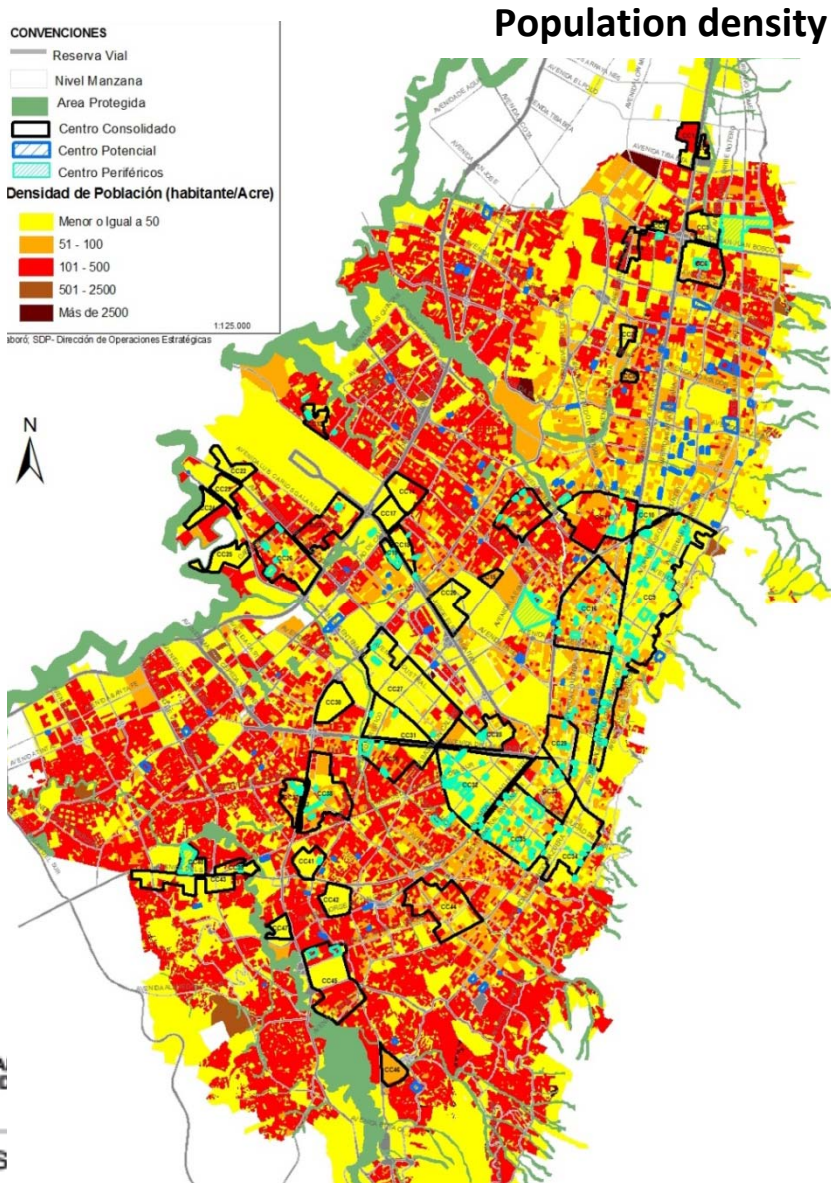
# Towards and inclusive city – current situation

- Stratified city by zones.
- Subsidies, public service rates, and taxes depend on social stratum.
- Socio-spatial segregation with unequal urban development.

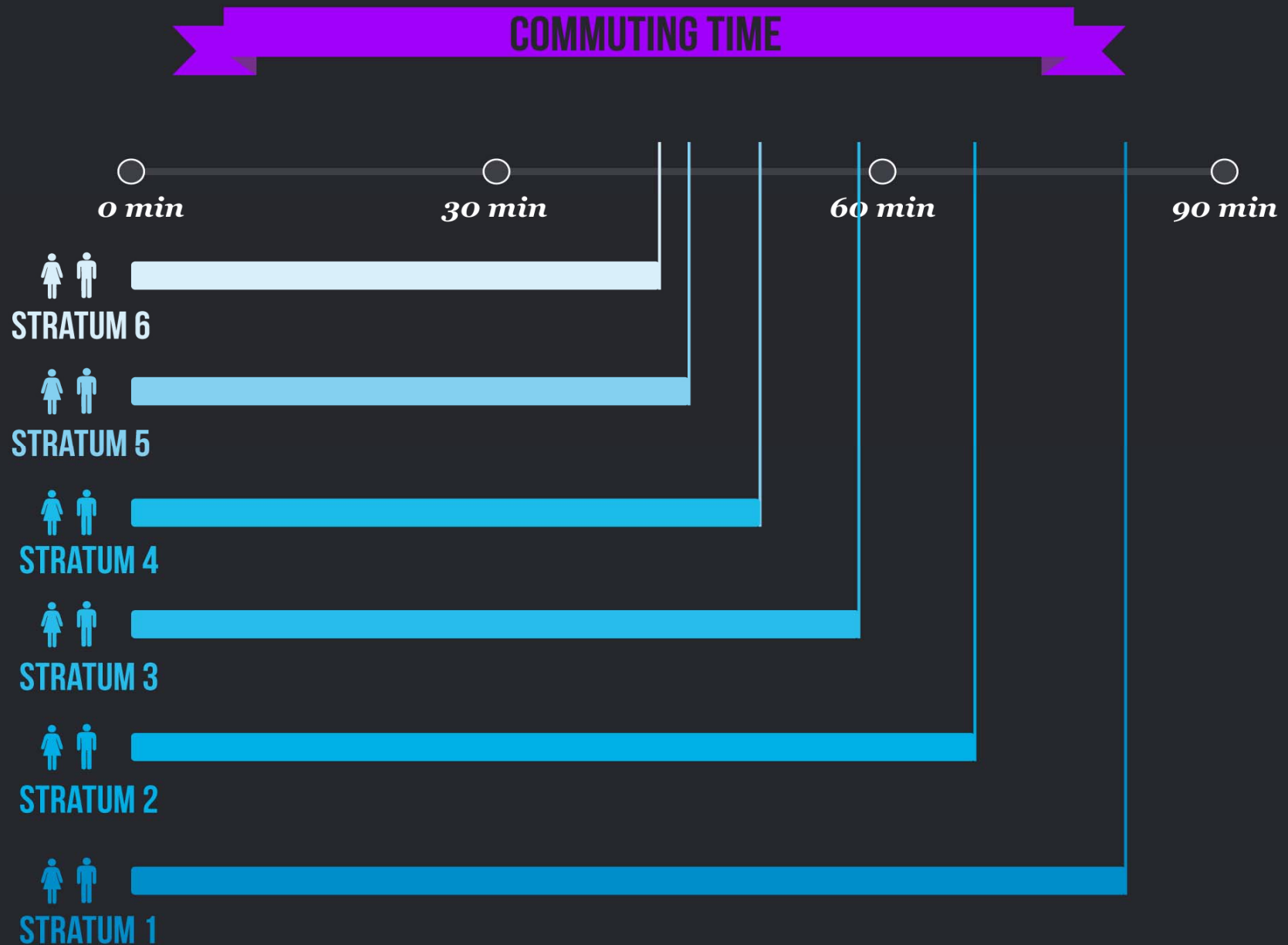


# Towards and inclusive city – current situation

## Urban unefficiency



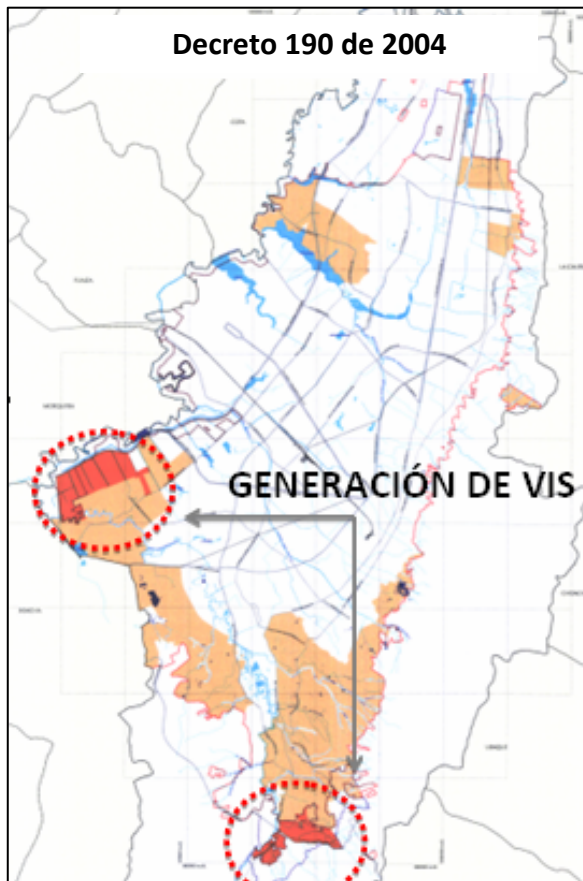
# Towards and inclusive city – current situation



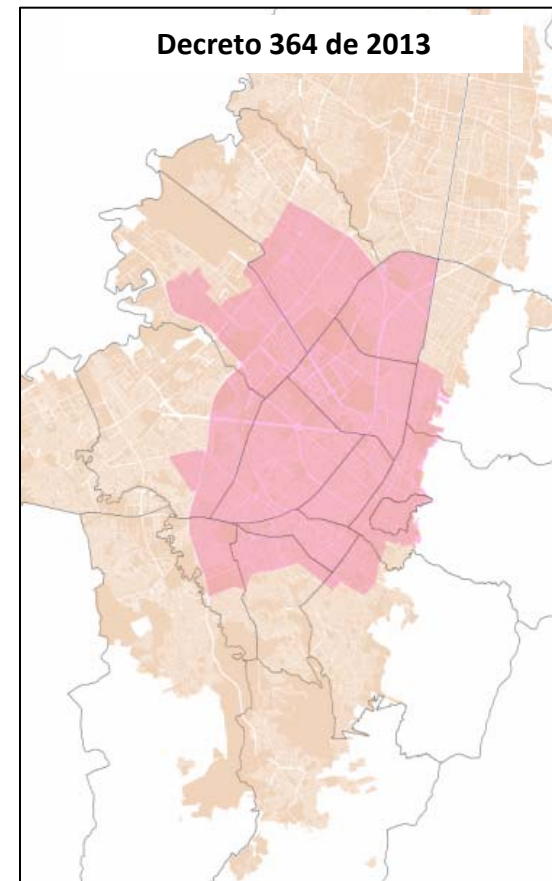
# Towards and inclusive city – main decisions

## Social housing

Before



Now



- Creates mechanisms to finance social housing and promotes it to be located in the central areas.

# Towards and inclusive city – Main decisions

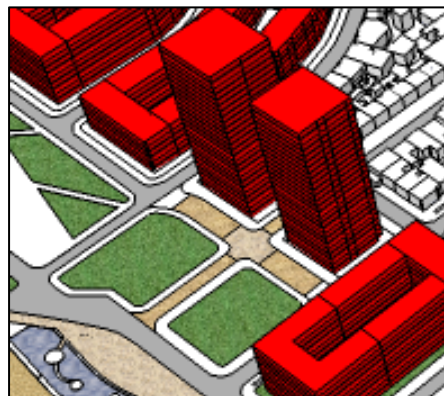
## Urban renovation



Property of cultural interest



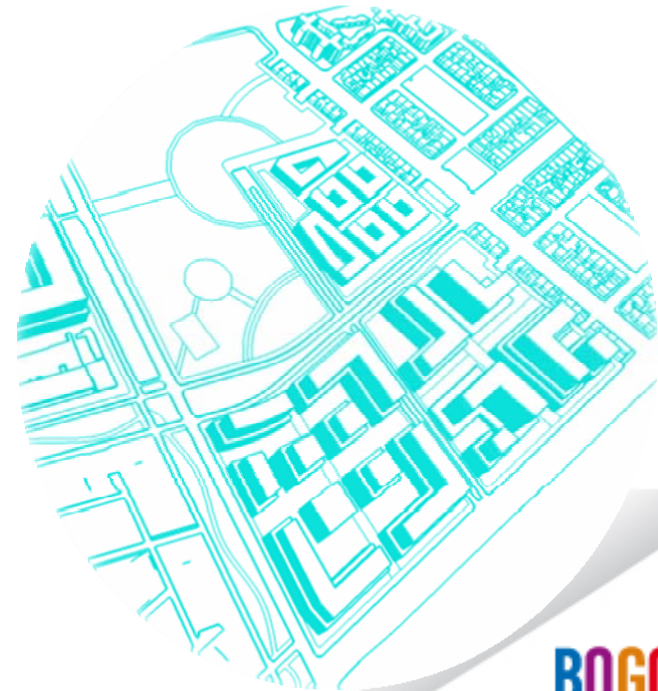
Without intervention



With intervention

## Participative urban renovation:

Public sector must coordinate actions in partnership with residents, land owners and developers



## Towards and inclusive city – Main decisions

Land use regulations allow recognition and formalization of small businesses in residential areas where legal licenses were denied under the old regulations



# Rural policy of land use

## Goal:

To recognize the economy and culture of rural communities, preserve moorland ecosystems and protect water sources.



# Strengthening Regional Integration



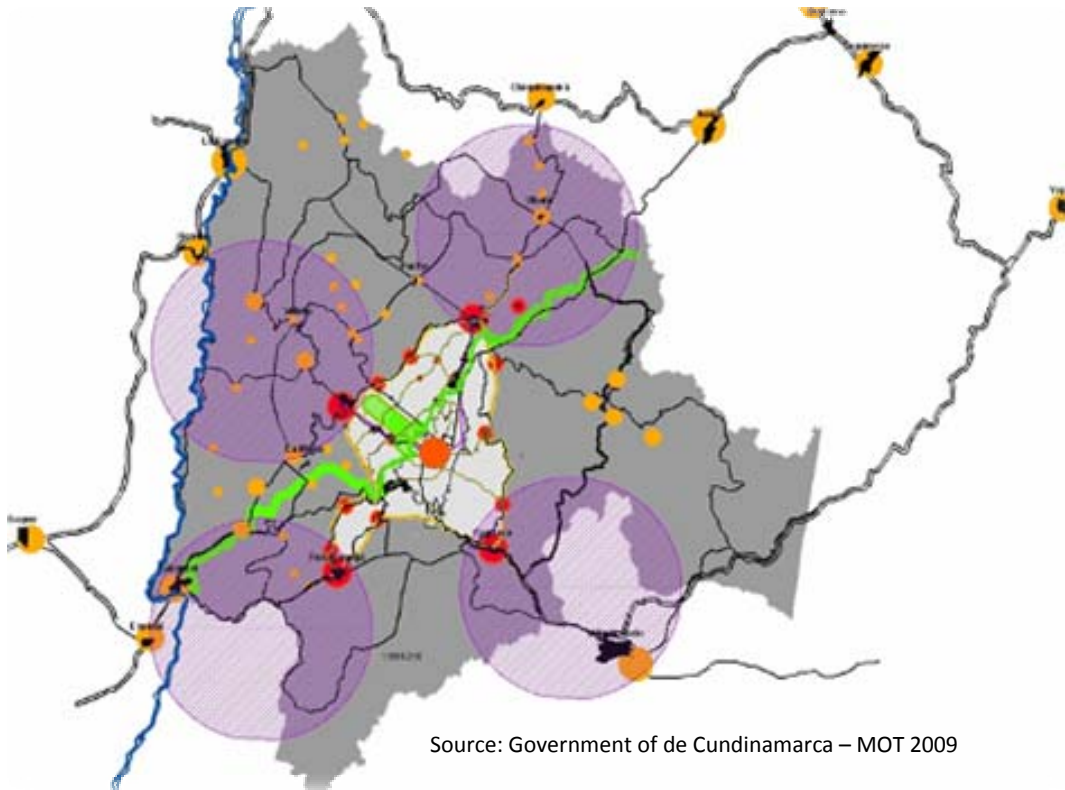
## Goal:

To link the Capital District planning with the Regional Planning System and control urban sprawl processes in Bogota and its surroundings

(As part of the process of urban decentralization and sustainable development of rural areas)



# Strengthening Regional Integration



Source: Government of de Cundinamarca – MOT 2009

## Regional occupation model

**Regional deconcentration** in terms of population and economic activities

Consolidation of a subregional **network of centralities** (characterized compact cities)

Balanced distribution of infrastructures related to strategic urban projects

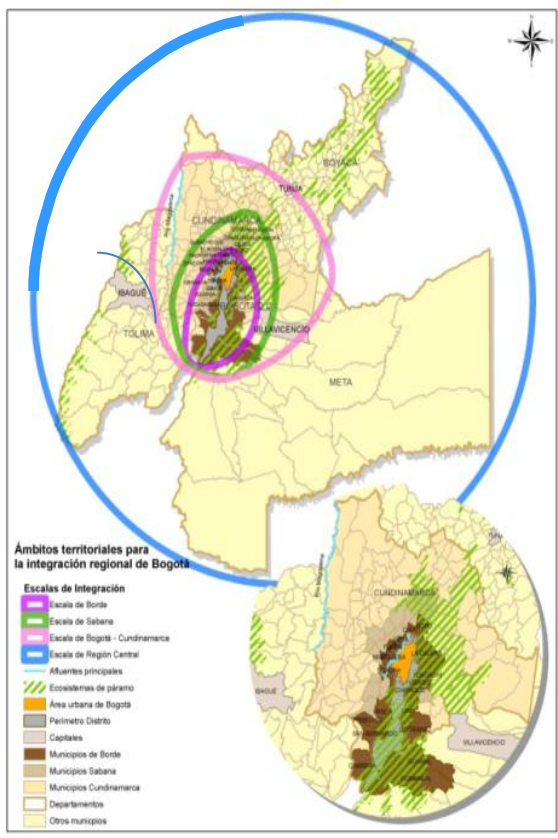


ALCALDÍA MAYOR  
DE BOGOTÁ D.C.

SECRETARÍA DE PLANEACIÓN

BOGOTÁ  
HUMANA

# Strengthening Regional Integration



**The focus: basic regional integration areas:**

We have chosen those systems in which a minimum scale is required:

- ✓ Environment
- ✓ Food supply
- ✓ Economic platforms
- ✓ Regional interconnection infrastructures

Consensus building around strategic project related to our prioritized “regional systems”.

plan de  
ordenamiento  
territorial  
**POT2013**



***Gracias!!!***

**BOGOTÁ**  
HU?ANA

*Carolina Chica Builes*  
*Director of Regional Integration*  
*Secretariat of Planning*  
*cchica@sdp.gov.co*



ALCALDÍA MAYOR  
DE BOGOTÁ D.C.

SECRETARÍA DE PLANEACIÓN

**BOGOTÁ**  
HU?ANA